



Doris Duke Final Report Lower Leg

Prepared for:

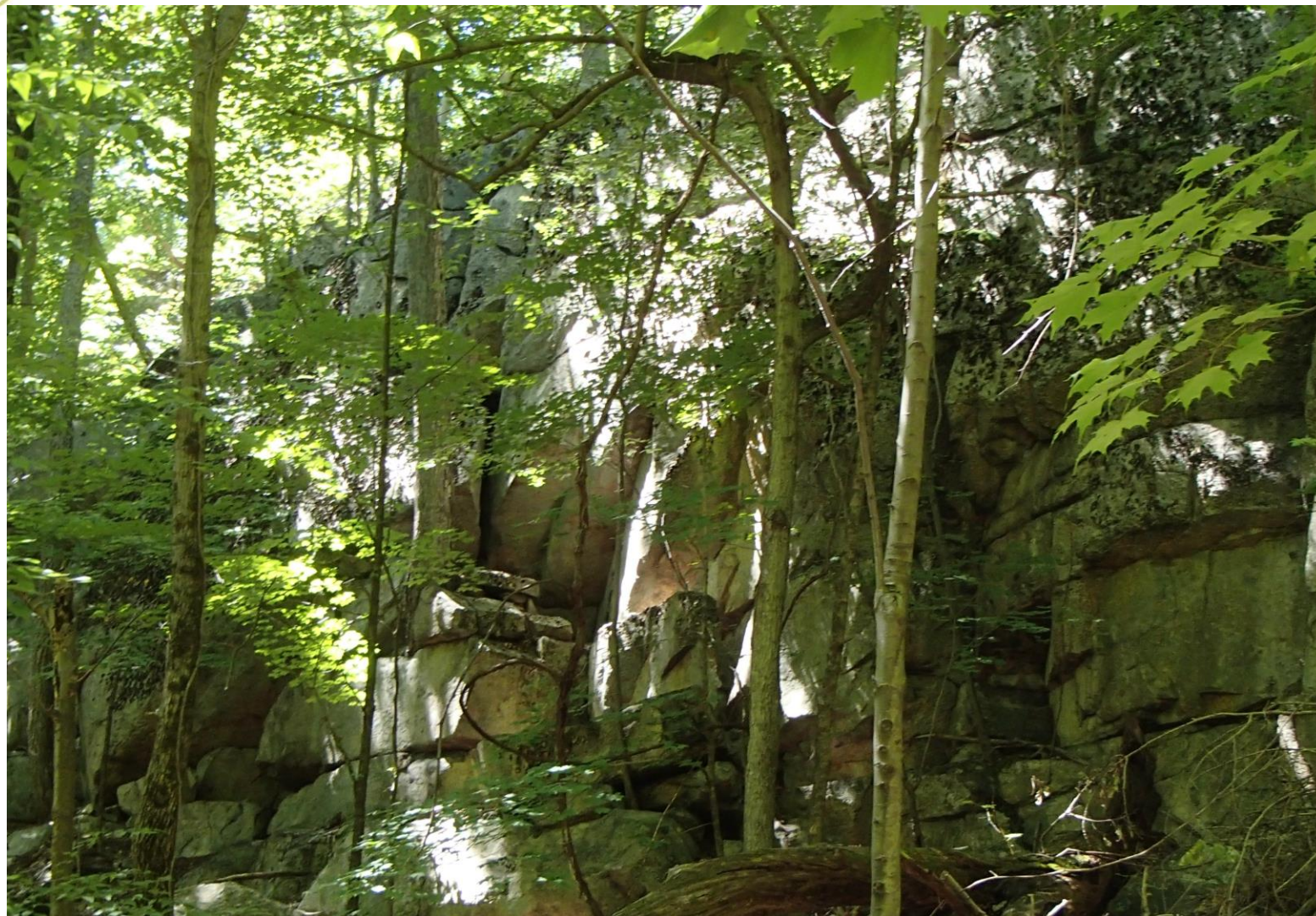
Sterling Forest Backcountry Trails Program

(Sterling Forest State Park, NY-NJ Trail Conference, NYS office of Parks, Recreation and Historical Preservation)

Prepared by:

NY-NJ Trail Conference

August 2013



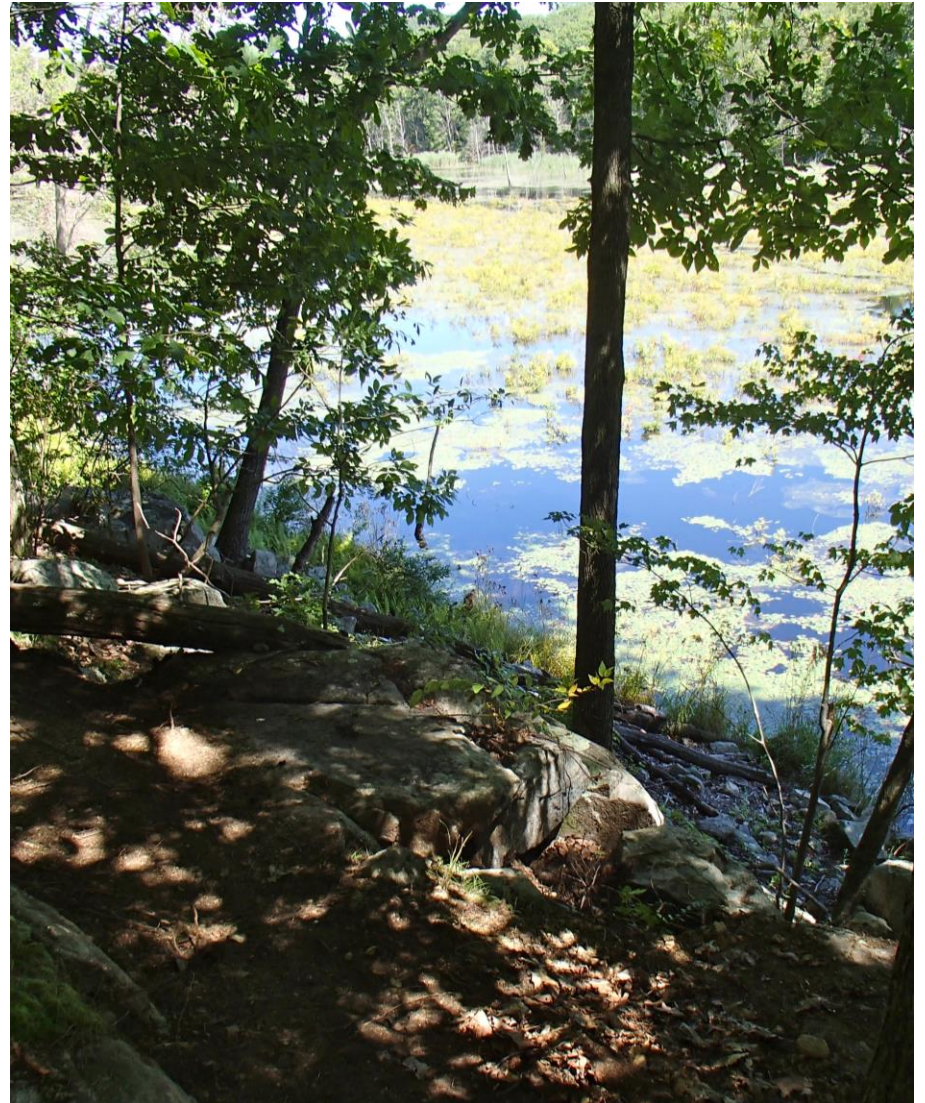
View of cliff from lower Doris Duke trail.



Connecting People with Nature since 1920



Volunteers cut sidehill.



Vista point from the Doris Duke.

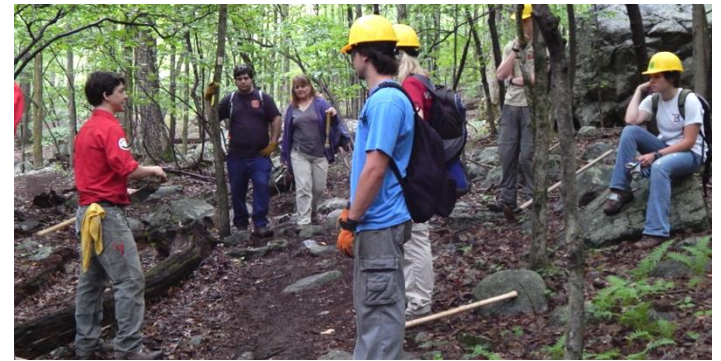


Connecting People with Nature since 1920

Volunteer Achievements

Workshops

During the period of mid-July 2013 through August 2013 a total of 53 individuals signed up to volunteer and take our Trail University Courses.



4 courses were offered. These courses included Tool Use & Safety, Side-hilling, and Trail Layout and Design.



Connecting People with Nature since 1920

Volunteer Achievements

Hours of Service

During the period of mid-July 2013 through August 2013
a total of 53 individuals volunteered a total of 1077.5 hours



New Volunteers: 41 volunteers worked 1029.5 hours including 4 workshops

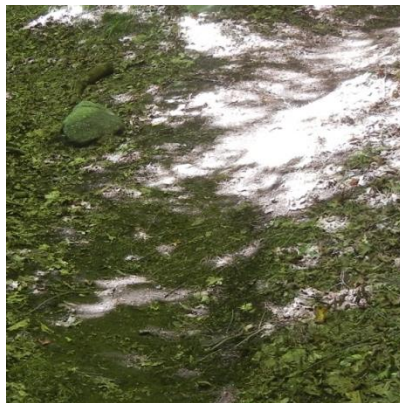
FEMA Americorps: 12 volunteers worked 48 hours



Construction Achievements

Tallies

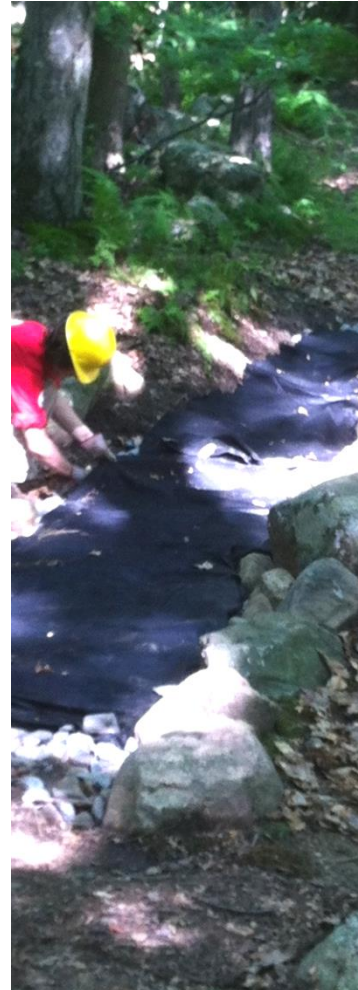
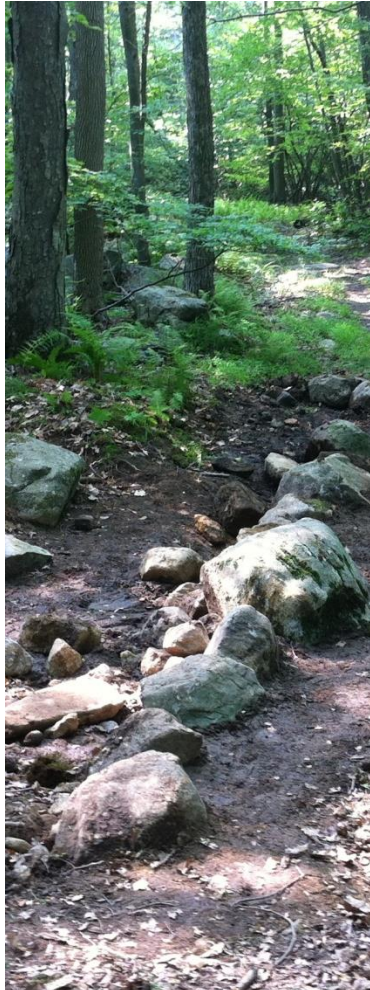
- 482 linear feet of Sidehill
- 499 linear feet of Natural Surface Treadway
- 41 square feet of Stone Crib Wall
- 50 square feet of Stone Paving





Connecting People with Nature since 1920

Construction Achievements



Crib wall and elevated tread over muddy area.



Connecting People with Nature since 1920

Construction Achievements



Sidehill tread.





Connecting People with Nature since 1920

Construction Achievements



Sidehill tread.





Connecting People with Nature since 1920

Construction Achievements



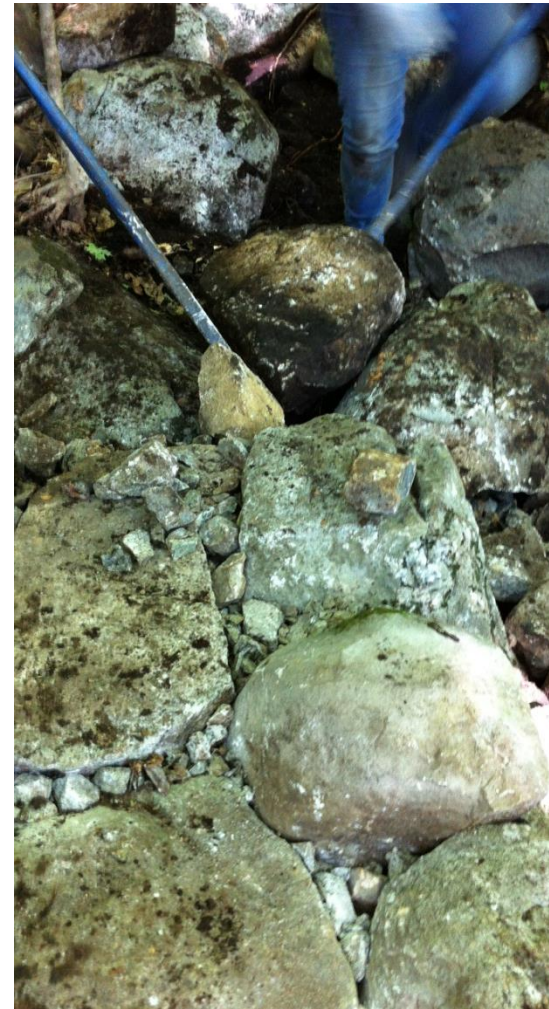
Sidehill tread.





Connecting People with Nature since 1920

Construction Achievements



Tread elevated, paved and filled.



Construction Achievements



Retained, filled and defined tread.



Connecting People with Nature since 1920

Construction Achievements



Sidehill tread.



Construction Achievements



Area of intermittent flow paved.